

dental arcade (2, 17, 18, 22) implies that the three gnathals were lost at the internode between arthrodirans and *Qilinju* and replaced with three new bones that occupied essentially the same positions but were slightly more external. Alternatively, if the gnathals are identified with the outer dental arcade, these bones remained in place and acquired facial laminae. Given the overall pattern stability of the dermal skeleton, the second hypothesis seems more probable. It also does not require the inner dental arcade to be acquired in placoderms, lost in *Qilinju* and *Entelognathus*, and then reevolved in osteichthyans. In any case, the boundary between inner and outer arcades is not completely rigid: For example, in the early tetrapod *Discosauriscus*, the posterior coronoid (a bone of the inner arcade) contributes to the external face of the lower jaw (29).

Under our new hypothesis, the dermal jaw bones form part of the overall pattern conservation of the dermal skeleton from placoderms to osteichthyans (2, 4). In their earliest form, the gnathal plates seen, for example, in antiarchs and arthrodirans were entirely oral and lacked facial laminae. Facial laminae were acquired at the internode below *Qilinju*. Between *Qilinju* and *Entelognathus*, the dentary lost its oral lamina, and the lower jaw acquired an external covering of infradentary bones. Between *Entelognathus* and crown osteichthyans, the maxilla and premaxilla lost their palatal (i.e., oral) laminae, and a new inner arcade of coronoids, ectopterygoids, dermopalatines, and vomers evolved.

This picture of gradual transformation underscores the emerging view of osteichthyans as the more conservative clade of crown gnathostomes (2, 9–11, 30), contrasting with the historically dominant perception of chondrichthyans as primitive and informative about ancestral gnathostome conditions (17, 18). We predict that future discoveries from the Xiaoxiang fauna will continue to fuel the debate about jawed vertebrate origins and challenge long-held beliefs about their evolution.

REFERENCES AND NOTES

- M. Zhu et al., *Nature* **458**, 469–474 (2009).
- M. Zhu et al., *Nature* **502**, 188–193 (2013).
- P. L. Forey, *Proc. R. Soc. London Ser. B* **208**, 369–384 (1980).
- J. G. Maisey, *Cladistics* **2**, 201–256 (1986).
- H.-P. Schultze, in *The Skull*, vol. 2, J. Janke, B. K. Hall, Eds. (Univ. of Chicago Press, 1993), pp. 189–254.
- H. Botella, H. Blom, M. Dorka, P. E. Ahlberg, P. Janvier, *Nature* **448**, 583–586 (2007).
- M. Friedman, M. D. Brazeau, *J. Vertebr. Paleontol.* **30**, 36–56 (2010).
- M. D. Brazeau, M. Friedman, *Nature* **520**, 490–497 (2015).
- V. Dupret, S. Sanchez, D. Goujet, P. Tafforeau, P. E. Ahlberg, *Nature* **507**, 500–503 (2014).
- J. A. Long et al., *Nature* **517**, 196–199 (2015).
- S. Giles, M. Friedman, M. D. Brazeau, *Nature* **520**, 82–85 (2015).
- P. E. Ahlberg, J. A. Clack, *Trans. R. Soc. Edinb. Earth Sci.* **89**, 11–46 (1998).
- G. H. Sperber, *Craniofacial Development* (B.C. Decker, 2001).
- C. A. Sidor, *Paleobiology* **29**, 605–640 (2003).
- S. H. Lee, O. Bédard, M. Buchtová, K. Fu, J. M. Richman, *Dev. Biol.* **276**, 207–224 (2004).
- Materials and methods and supplementary text are available as supplementary materials on Science Online.
- E. A. Stensio, *Kungl. Svenska Vetenskap. Hand.* **9**, 1–419 (1963).

- E. A. Stensio, in *Traité de Paléontologie*, J. Piveteau, Ed. (Masson, 1969), vol. 4(2), pp. 71–692.
- E. Jarvik, *Basic Structure and Evolution of Vertebrates*, vol. 1 (Academic Press, 1980).
- D. F. Goujet, *Proc. Linn. Soc. N. S. W.* **107**, 211–243 (1984).
- B. G. Gardiner, *J. Vertebr. Paleontol.* **4**, 379–395 (1984).
- G. C. Young, *Zool. J. Linn. Soc.* **88**, 1–57 (1986).
- P. Janvier, *Early Vertebrates* (Clarendon Press, 1996).
- G. C. Young, *Annu. Rev. Earth Planet. Sci.* **38**, 523–550 (2010).
- G. C. Young, *Palaeontology* **27**, 635–661 (1984).
- M. Zhu, X. Yu, B. Choo, J. Wang, L. Jia, *Biol. Lett.* **8**, 453–456 (2012).
- G. C. Young, *Palaeontogr. Abt. A* **167**, 10–76 (1980).
- M. Rucklin et al., *Nature* **491**, 748–751 (2012).
- J. Klembara, *Philos. Trans. R. Soc. Lond. B Biol. Sci.* **352**, 257–302 (1997).
- A. Pradel, J. G. Maisey, P. Tafforeau, R. H. Mapes, J. Mallatt, *Nature* **509**, 608–611 (2014).

ACKNOWLEDGMENTS

We thank X. Lu, J. Zhang, C.-H. Xiong, C.-Y. Xiong, J. Xiong, Q. Deng, and Q. Wen for specimen preparation and field work; Y.-M. Hou and X. Huang for computed tomography scanning and rendering; and D. Yang and Q. Zeng for artwork. This work was

supported by Major Basic Research Projects of China (grant 2012CB821902), the National Natural Science Foundation of China (grant 41530102), the National Major Scientific Instrument and Equipment Development Project of China (grant 2011YQ03012), and the Chinese Academy of Sciences (grant QYZDJ-SSW-DQ002; Funds for Paleontology Fieldwork and Fossil Preparation). P.E.A. and Y.Z. were supported by Swedish Research Council grant 2014-4102 and a Wallenberg Scholarship from the Knut and Alice Wallenberg Foundation, both awarded to P.E.A. The phylogenetic data used in the paper, as well as information about the specimen provenance and repository, are archived in the supplementary materials.

SUPPLEMENTARY MATERIALS

www.sciencemag.org/content/354/6310/334/suppl/DC1

Materials and Methods

Supplementary Text

Figs. S1 to S12

Table S1

References (31–227)

Data S1 and S2

16 June 2016; accepted 31 August 2016

10.1126/science.aah3764

EVOLUTION

Predictable convergence in hemoglobin function has unpredictable molecular underpinnings

Chandrasekhar Natarajan,¹ Federico G. Hoffmann,² Roy E. Weber,³ Angela Fago,³ Christopher C. Witt,⁴ Jay F. Storz^{1*}

To investigate the predictability of genetic adaptation, we examined the molecular basis of convergence in hemoglobin function in comparisons involving 56 avian taxa that have contrasting altitudinal range limits. Convergent increases in hemoglobin-oxygen affinity were pervasive among high-altitude taxa, but few such changes were attributable to parallel amino acid substitutions at key residues. Thus, predictable changes in biochemical phenotype do not have a predictable molecular basis. Experiments involving resurrected ancestral proteins revealed that historical substitutions have context-dependent effects, indicating that possible adaptive solutions are contingent on prior history. Mutations that produce an adaptive change in one species may represent precluded possibilities in other species because of differences in genetic background.

A fundamental question in evolutionary genetics concerns the extent to which adaptive convergence in phenotype is caused by convergent or parallel changes at the molecular sequence level. This question has important implications for understanding the inherent repeatability (and, hence, predictability) of molecular adaptation. One especially powerful approach for addressing this question involves the examination of phylogenetically replicated changes in protein function that can be traced to specific amino acid replacements. If adaptive

changes in protein function can only be produced by a small number of possible mutations at a small number of key sites—representing “forced moves” in genotype space—then evolutionary outcomes may be highly predictable. Alternatively, if adaptive changes can be produced by numerous possible mutations—involving different structural or functional mechanisms, but achieving equally serviceable results—then evolutionary outcomes may be more idiosyncratic and unpredictable (1–4). The probability of replicated substitution at the same site in different species may be further reduced by context-dependent mutational effects (epistasis), because a given mutation will only contribute to adaptive convergence if it retains a beneficial effect across divergent genetic backgrounds (4).

To assess the pervasiveness of parallel molecular evolution and to investigate its causes, we examined replicated changes in the oxygenation properties of hemoglobin (Hb) in multiple bird

¹School of Biological Sciences, University of Nebraska, Lincoln, NE 68588, USA. ²Department of Biochemistry, Molecular Biology, Entomology, and Plant Pathology and Institute for Genomics, Biocomputing, and Biotechnology, Mississippi State University, Mississippi State, MS 39762, USA. ³Zoophysiology, Department of Bioscience, Aarhus University, DK-8000 Aarhus, Denmark. ⁴Department of Biology and Museum of Southwestern Biology, University of New Mexico, Albuquerque, NM 87131, USA.

*Corresponding author. E-mail: jstorz2@unl.edu

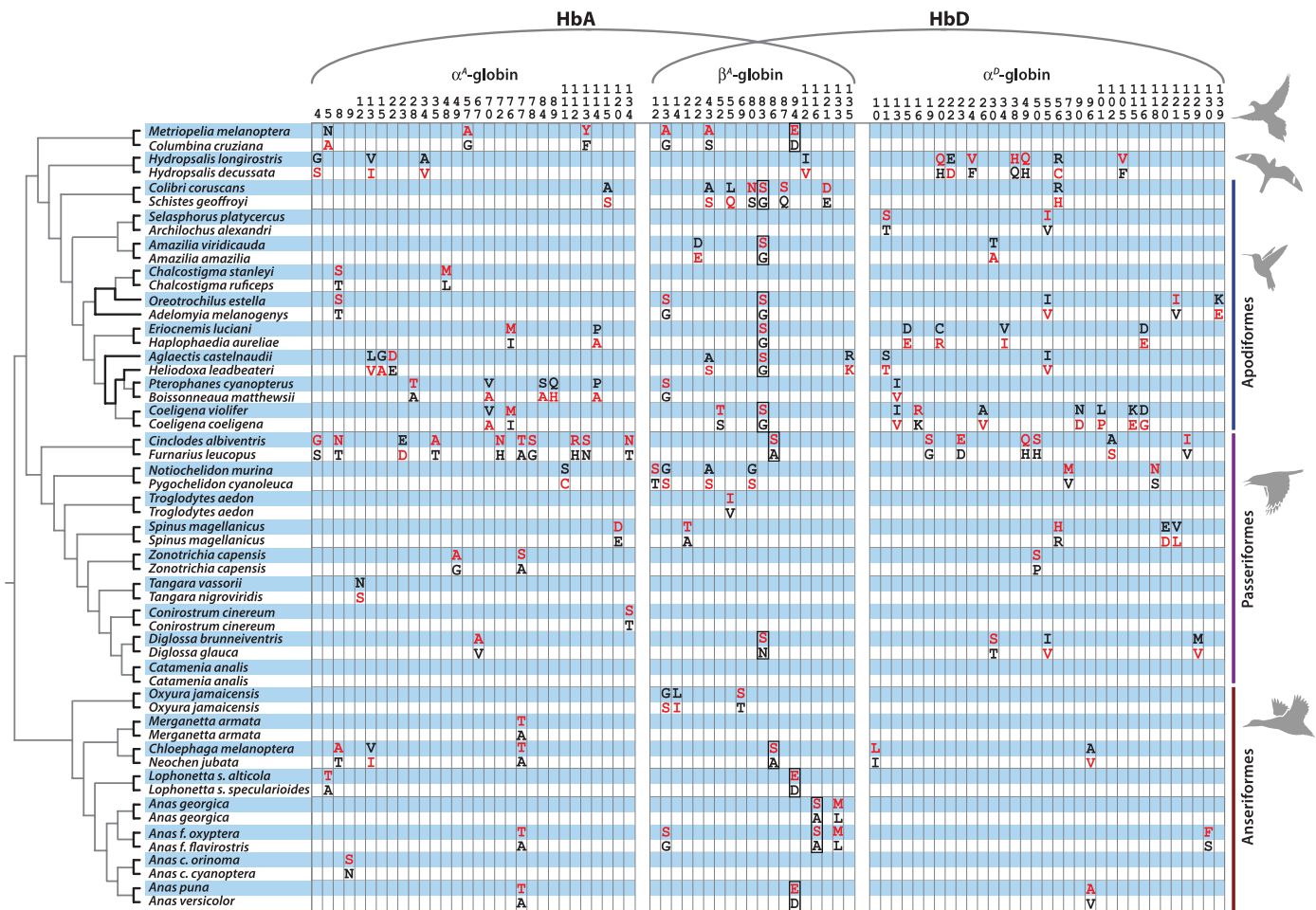


Fig. 1. Amino acid differences that distinguish the Hbs of each pair of high- and low-altitude taxa. Derived (nonancestral) amino acids are shown in red lettering, and rows corresponding to high-altitude taxa are shaded in blue. Subunits of the major HbA isoform are encoded by the α^A - and β^A -globin genes, whereas those of the minor HbD isoform are encoded by the α^D - and β^A -globin genes. Phylogenetically replicated β -chain replacements that contribute to convergent increases in Hb-O₂ affinity (N/G83S, A86S, D94E, and A116S) are outlined. Single-letter abbreviations for the amino acid residues are as follows: A, Ala; C, Cys; D, Asp; E, Glu; F, Phe; G, Gly; H, His; I, Ile; K, Lys; L, Leu; M, Met; N, Asn; P, Pro; Q, Gln; R, Arg; S, Ser; T, Thr; V, Val; and Y, Tyr.

species that have independently colonized high-altitude environments. Specifically, we tested whether high-altitude taxa have convergently evolved derived increases in Hb-O₂ affinity, and we assessed the extent to which such changes are attributable to parallel amino acid substitutions. We performed comparisons of Hb function in 56 avian taxa making up 28 pairs of high- and low-altitude lineages (table S1). The comparisons involved pairs of species or conspecific populations that are native to different altitudes.

Under severe hypoxia, an increased Hb-O₂ affinity can help sustain tissue O₂ delivery by safeguarding arterial O₂ saturation while simultaneously maintaining the pressure gradient for O₂ diffusion from capillary blood to the tissue mitochondria, so altitude-related changes in Hb function likely have adaptive relevance (5, 6). Evolutionary increases in Hb-O₂ affinity can be caused by amino acid mutations that increase intrinsic O₂ affinity and/or mutations that suppress the sensitivity of Hb to the inhibitory effects of allosteric effectors such as Cl⁻ ions and organic phosphates (5, 7).

In a highly influential paper on biophysical mechanisms of protein evolution, Perutz (7) predicted that adaptive changes in functional properties of vertebrate Hb are typically attributable to “a few replacements at key positions.” According to Perutz, amino acid substitutions that can be expected to make especially important contributions to evolutionary changes in Hb-O₂ affinity involve heme-protein contacts (affecting intrinsic heme reactivity), intersubunit contacts (affecting the oxygenation-linked, allosteric transition in quaternary structure), and binding sites for allosteric effectors (7). If Perutz is correct that adaptive modifications of Hb function are typically attributable to a small number of substitutions at key positions, then it follows that the same mutations will be preferentially fixed in different species that have independently evolved Hbs with similar functional properties. For example, in high-altitude vertebrates that have convergently evolved elevated Hb-O₂ affinities, Perutz’s hypothesis predicts that parallel amino acid substitutions should be pervasive.

Most bird species express two tetrameric ($\alpha_2\beta_2$) Hb isoforms in adult red blood cells: (i) the major

hemoglobin A (HbA) isoform, which incorporates α -chain products of the α^A -globin gene, and (ii) the minor HbD isoform, which incorporates products of the closely linked α^D -globin gene. Both isoforms share the same β -chain subunits. By cloning and sequencing the adult-expressed globin genes, we identified all amino acid differences that distinguish the Hbs of each pair of high- and low-altitude taxa. The comparative sequence data revealed phylogenetically replicated replacements at numerous sites in the α^A -, α^D -, and β^A -globins (Fig. 1 and figs. S1 and S2).

After identifying the complete set of Hb substitutions that distinguish each pair of high- and low-altitude taxa, we experimentally assessed how many of the replicated amino acid replacements actually contributed to convergent changes in Hb function. To characterize the functional mechanisms that are responsible for evolved changes in Hb-O₂ affinity, we measured P_{50} (the O₂ partial pressure at which Hb is 50% saturated) of purified Hbs in the presence and absence of Cl⁻ ions and the organic phosphate inositol hexaphosphate (IHP) (8). We focus on measures of P_{50} in the

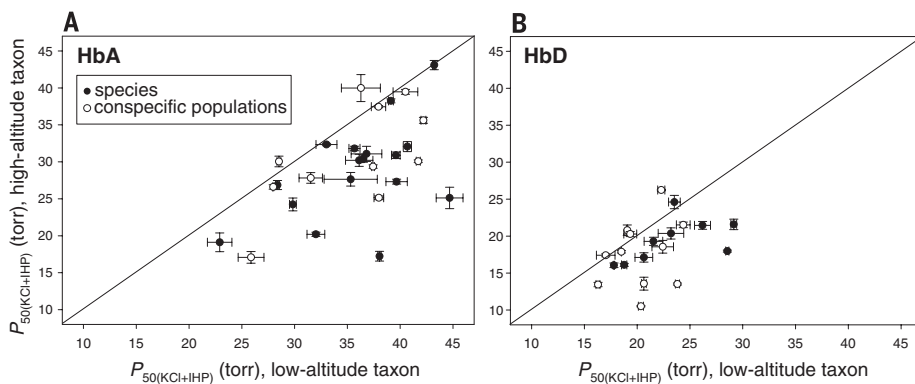


Fig. 2. Convergent increases in Hb- O_2 affinity in high-altitude Andean birds. (A) Plot of $P_{50(KCl+IHP)}$ (± 1 SE) for HbA in 28 matched pairs of high- and low-altitude taxa. Data points that fall below the diagonal line ($x = y$) denote cases in which the high-altitude member of a given taxon pair possesses a higher Hb- O_2 affinity (lower P_{50}). Comparisons involve replicated pairs of taxa, so all data points are phylogenetically independent. (B) Plot of $P_{50(KCl+IHP)}$ (± 1 SE) for the minor HbD isoform in a subset of the same taxa pairs in which both members of the pair express HbD. $P_{50(KCl+IHP)}$, O_2 partial pressure at which Hb is 50% saturated in the presence of chloride and inositol hexaphosphate.

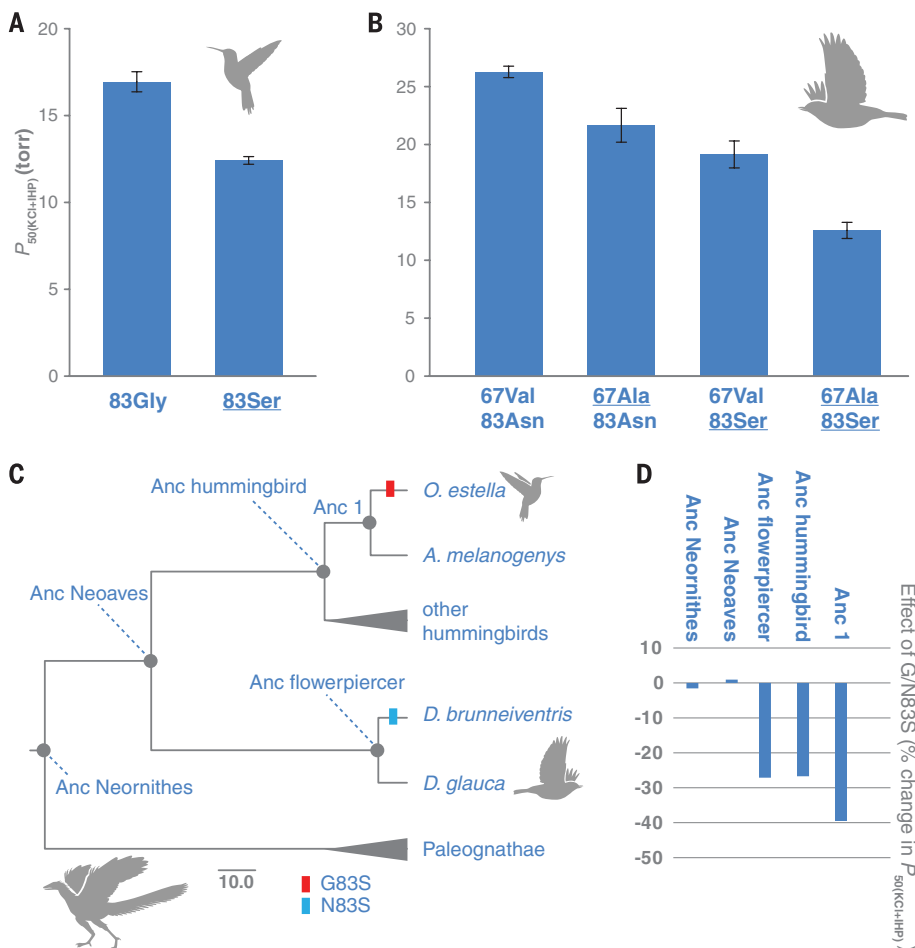


Fig. 3. Phenotypic effects of substitutions at $\beta 83$ are conditional on genetic background. (A) The engineered G83S mutation produced a significant reduction in $P_{50(KCl+IHP)}$ (increase in Hb- O_2 affinity) in the reconstructed Hb of the hummingbird ancestor. (B) The engineered A67V and N83S mutations produced additive reductions in $P_{50(KCl+IHP)}$ in the reconstructed Hb of the flowerpiercer ancestor. Underlining indicates derived (nonancestral) amino acids. (C) Diagrammatic tree with time-scaled branch lengths showing internal nodes that we targeted for ancestral protein resurrection. Scale bar, 10 million years. (D) N/G83S mutations produced significant increases in Hb- O_2 affinity (expressed as reductions in $P_{50(KCl+IHP)}$) in the ancestors of hummingbirds and flowerpiercers. Substitutions at the same site produced no detectable effects in Anc Neoaves or Anc Neornithes.

presence of Cl^- and IHP, because this experimental treatment is most relevant to in vivo conditions in avian red blood cells.

HbD exhibited uniformly higher O_2 affinities than HbA in all examined taxa (table S2), consistent with results of previous studies (9–13). This consistent pattern of isoform differentiation suggests that up-regulating the expression of HbD could provide a ready means of increasing blood O_2 affinity. However, our results demonstrate that this regulatory mechanism does not play a general role in hypoxia adaptation, because there was no consistent trend of increased HbD expression among high-altitude taxa (Wilcoxon signed-rank test, $Z = -0.775$, $P = 0.441$, $n = 26$; table S3 and fig. S3).

Phylogenetically independent comparisons involving all 28 taxon pairs revealed that highland natives have generally evolved an increased Hb- O_2 affinity relative to that of their lowland counterparts, a pattern that is consistent for both HbA (Wilcoxon's signed-rank test, $Z = -4.236$, $P < 0.0001$, $n = 28$; Fig. 2A and table S2) and HbD ($Z = -2.875$, $P = 0.0041$, $n = 20$; Fig. 2B and table S2). In all pairwise comparisons in which the high-altitude taxa exhibited significantly higher Hb- O_2 affinities ($n = 22$ taxon pairs for HbA and 15 taxon pairs for HbD), the measured differences were almost entirely attributable to differences in intrinsic O_2 affinity, rather than differences in sensitivity to Cl^- or IHP (table S4). Thus, genetically based increases in Hb- O_2 affinity were not generally associated with a diminution of allosteric regulatory capacity (i.e., O_2 affinity could still be modulated by erythrocytic changes in anion concentrations), in contrast to the case with some high-altitude mammals (5, 14, 15).

Results of experiments based on both native Hb variants and engineered, recombinant Hb mutants revealed that only a subset of replicated replacements actually contributed to convergent increases in Hb- O_2 affinity in high-altitude taxa (table S5). These include replicated replacements at just four β -chain sites: N/G83S, A86S, D94E, and A116S. $\beta 116$ is an $\alpha_1\beta_1$ intersubunit contact, and $\beta 94$ plays a key role in allosteric proton binding; neither of the other replicated replacements—and few of the affinity-enhancing non-replicated replacements—involved heme contacts, intersubunit contacts, or canonical binding sites for allosteric effectors.

Our experiments revealed a striking pattern of convergence in the oxygenation properties of Hb in high-altitude natives (Fig. 2, A and B), and, in several cases, convergent increases in Hb- O_2 affinity were caused by parallel substitutions at key residues that mediate protein allostery (e.g., D94E in the β -chains of high-altitude doves and waterfowl; Fig. 1 and table S5). However, in the majority of cases, convergent increases in Hb- O_2 affinity were attributable to nonreplicated substitutions and/or parallel substitutions at sites that are not considered “key residues” (e.g., N/G83S in the β -chains of high-altitude hummingbirds and flowerpiercers; Fig. 1). Clearly, evolutionary increases in Hb- O_2 affinity can be produced by amino acid substitutions at numerous sites.

These findings expose a clear demarcation between the realms of chance and necessity at different hierarchical levels. At the level of biochemical phenotype, and even at the level of functional mechanism, evolutionary changes are highly predictable. At the amino acid level, in contrast, predictability breaks down.

In addition to the many-to-one mapping of genotype to phenotype, the phylogenetic distribution of affinity-enhancing parallel substitutions suggests another possible explanation for the limited contribution of such substitutions to convergent functional changes in the Hbs of distantly related species. The most striking functional parallelism at the amino acid level was concentrated in the hummingbird clade. Replicated G83S substitutions contributed to convergent increases in Hb-O₂ affinity in multiple high-altitude hummingbird species (table S5 and fig. S4) (16), and a convergent substitution at the same site (N83S) occurred in one other (nonhummingbird) high-altitude species: the black-throated flowerpiercer, *Diglossa brunneiventris*. One possible explanation for this phylogenetically concentrated pattern of parallelism is that the mutation's phenotypic effect is conditional on genetic background, so the same mutation produces different effects in different species.

To test this hypothesis, we used ancestral sequence reconstruction in combination with site-directed mutagenesis to test the effect of β83 substitutions in a set of distinct genetic backgrounds. We first resurrected HbA of the common ancestor of hummingbirds ("Anc hummingbird") (figs. S5 to S7), and we confirmed that G83S has a significant affinity-enhancing effect on this ancestral genetic background (Fig. 3A). This result is consistent with the affinity-enhancing effect of G83S in numerous descendant lineages of high-altitude hummingbirds (table S5 and fig. S4). In similar fashion, we resurrected HbA of the common ancestor of the high- and low-altitude flowerpiercers ("Anc flowerpiercer") to test the effect of N83S (fig. S7). Hbs of the two flowerpiercers differed at two sites because of substitutions in the *D. brunneiventris* lineage (V67A in α^A-globin, in addition to N83S in β^A-globin; Fig. 1). We therefore synthesized a total of four recombinant Hb mutants, representing each possible genotypic combination of the two substituted sites, to measure the relative contributions of V67A and N83S to the evolved increase in Hb-O₂ affinity in *D. brunneiventris* (table S2 and fig. S4). The tests showed that both mutations increased Hb-O₂ affinity in an additive fashion (Fig. 3B). We then engineered the same N83S mutation into resurrected ancestral Hbs representing two far more ancient nodes in the avian phylogeny: the reconstructed common ancestor of Neoaves ("Anc Neoaves") and the common ancestor of all extant birds ("Anc Neornithes") (Fig. 3C and figs. S5, S7, S8, and S9). In contrast to the highly significant effects of N/G83S in hummingbird and flowerpiercer Hbs, N83S produced no detectable effect in Anc Neoaves or Anc Neornithes (Fig. 3D and table S6). The ancestral hummingbird and flowerpiercer Hbs contained 18 and 32 amino

acid states, respectively, that were not present in Anc Neornithes (fig. S7), representing net sequence differences that accumulated over a ~100-million-year time period. The context-dependent effects of N/G83S indicate that lineage-specific substitutions in the ancestry of hummingbirds and flowerpiercers produced a genetic background in which mutations at β83 could contribute to an adaptive increase in Hb-O₂ affinity. This adaptive solution was apparently not an option in the deeper ancestry of birds and may also represent a precluded possibility in contemporary, high-altitude members of other avian lineages.

These findings reveal a potentially important role of contingency in adaptive protein evolution. In different species that are adapting to the same selection pressure, the set of possible amino acids at a given site that have unconditionally beneficial effects may be contingent on the set of antecedent substitutions that have independently accumulated in the history of each lineage. Consequently, possible options for adaptive change in one species may be foreclosed options in other species.

REFERENCES AND NOTES

1. D. L. Stern, V. Orgogozo, *Science* **323**, 746–751 (2009).
2. J. B. Losos, *Evolution* **65**, 1827–1840 (2011).
3. D. L. Stern, *Nat. Rev. Genet.* **14**, 751–764 (2013).
4. J. F. Storz, *Nat. Rev. Genet.* **17**, 239–250 (2016).
5. R. E. Weber, *Respir. Physiol. Neurobiol.* **158**, 132–142 (2007).

6. J. F. Storz, G. R. Scott, Z. A. Cheviron, *J. Exp. Biol.* **213**, 4125–4136 (2010).
7. M. F. Perutz, *Mol. Biol. Evol.* **1**, 1–28 (1983).
8. Materials and methods are available as supplementary materials on Science Online.
9. M. T. Grispo et al., *J. Biol. Chem.* **287**, 37647–37658 (2012).
10. Z. A. Cheviron et al., *Mol. Biol. Evol.* **31**, 2948–2962 (2014).
11. S. C. Galen et al., *Proc. Natl. Acad. Sci. U.S.A.* **112**, 13958–13963 (2015).
12. C. Natarajan et al., *PLOS Genet.* **11**, e1005681 (2015).
13. J. C. Opazo et al., *Mol. Biol. Evol.* **32**, 871–887 (2015).
14. J. F. Storz, A. M. Runck, H. Moriyama, R. E. Weber, A. Fago, *J. Exp. Biol.* **213**, 2565–2574 (2010).
15. C. Natarajan et al., *Mol. Biol. Evol.* **32**, 978–997 (2015).
16. J. Projecto-Garcia et al., *Proc. Natl. Acad. Sci. U.S.A.* **110**, 20669–20674 (2013).

ACKNOWLEDGMENTS

This work was funded by grants from the U.S. NIH (HL087216), the U.S. NSF (IOS-0949931, MCB-1517636, and MCB-1516660), and the Danish Council for Independent Research (10-084-565 and 4181-00094). We thank E. Petersen, H. Moriyama, and A. Kumar for assistance in the laboratory and C. Meiklejohn and K. Montooth for helpful suggestions. All experimental data are tabulated in the supplementary materials, and sequence data are archived in GenBank under accession numbers KX240692 to KX241466.

SUPPLEMENTARY MATERIALS

www.sciencemag.org/content/354/6310/336/suppl/DC1
Materials and Methods
Figs. S1 to S9
Tables S1 to S6
References (17–33)
19 April 2016; accepted 20 July 2016
10.1126/science.aaf9070

ENZYMOLOGY

The biosynthetic pathway of coenzyme F430 in methanogenic and methanotrophic archaea

Kaiyuan Zheng, Phong D. Ngo, Victoria L. Owens, Xue-peng Yang,* Steven O. Mansoorabadi†

Methyl-coenzyme M reductase (MCR) is the key enzyme of methanogenesis and anaerobic methane oxidation. The activity of MCR is dependent on the unique nickel-containing tetrapyrrole known as coenzyme F430. We used comparative genomics to identify the coenzyme F430 biosynthesis (*cfb*) genes and characterized the encoded enzymes from *Methanosarcina acetivorans* C2A. The pathway involves nickelochelation by a nickel-specific chelatase, followed by amidation to form Ni-sirohydrochlorin a,c-diamide. Next, a primitive homolog of nitrogenase mediates a six-electron reduction and γ-lactamization reaction before a Mur ligase homolog forms the six-membered carbocyclic ring in the final step of the pathway. These data show that coenzyme F430 can be synthesized from sirohydrochlorin using *Cfb* enzymes produced heterologously in a nonmethanogen host and identify several targets for inhibitors of biological methane formation.

Methanogenic archaea are a major player in the global carbon cycle, producing nearly 1 billion metric tons of methane annually (1, 2). The terminal step of methanogenesis is catalyzed by methyl-coenzyme M reductase (MCR) and involves the conversion of coenzyme B (CoB-SH) and methyl-coenzyme M (MeS-CoM) to the mixed heterodisulfide CoB-S-S-CoM and methane (3) (Fig. 1).

MCR uses the unique nickel-containing tetrapyrrole coenzyme F430 to carry out its catalytic function (4) (Fig. 1). Recently, anaerobic methanotrophic archaea (ANME) have been shown

Department of Chemistry and Biochemistry, Auburn University, Auburn, AL 36849, USA.
*Present address: School of Food and Biological Engineering, Zhengzhou University of Light Industry, Zhengzhou 450002, China.
†Corresponding author. Email: som@auburn.edu

Predictable convergence in hemoglobin function has unpredictable molecular underpinnings

Chandrasekhar Natarajan, Federico G. Hoffmann, Roy E. Weber, Angela Fago, Christopher C. Witt and Jay F. Storz

Science **354** (6310), 336-339.
DOI: 10.1126/science.aaf9070

Expect the unexpected

In convergent evolution, similar environmental conditions produce similar sets of adaptations. Does similar convergence exist in the molecular underpinnings of such morphological changes? Natarajan *et al.* looked across more than 50 species of birds that have adapted to different elevations to identify patterns of similarity in hemoglobin-oxygen binding affinity (see the Perspective by Bridgham). Increases in hemoglobin-oxygen binding affinity occurred in alpine species, but the molecular changes underlying the hemoglobin changes were variable. Thus, even in cases where adaptive phenotypic change is predictable, the molecular pathways to these changes may not be.

Science, this issue p. 336; see also p. 289

ARTICLE TOOLS

<http://science.sciencemag.org/content/354/6310/336>

SUPPLEMENTARY MATERIALS

<http://science.sciencemag.org/content/suppl/2016/10/20/354.6310.336.DC1>

RELATED CONTENT

<http://science.sciencemag.org/content/sci/354/6310/289.full>
<http://stm.sciencemag.org/content/scitransmed/8/360/360ra134.full>
<http://stm.sciencemag.org/content/scitransmed/8/359/359ra130.full>
<http://stm.sciencemag.org/content/scitransmed/4/123/123ra26.full>
<http://stm.sciencemag.org/content/scitransmed/2/51/51ra71.full>

REFERENCES

This article cites 31 articles, 22 of which you can access for free
<http://science.sciencemag.org/content/354/6310/336#BIBL>

PERMISSIONS

<http://www.sciencemag.org/help/reprints-and-permissions>

Use of this article is subject to the [Terms of Service](#)